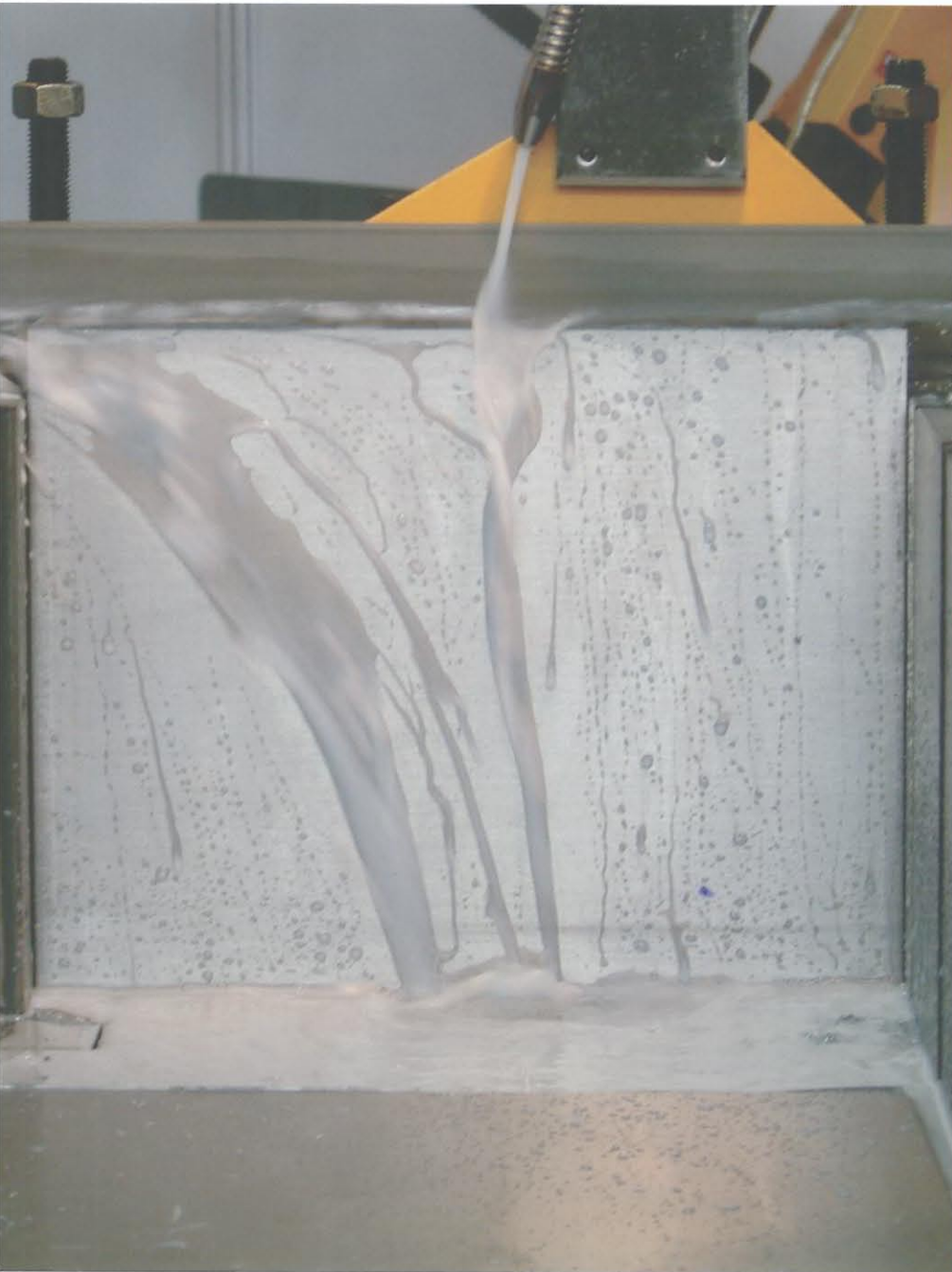


EVERISING

EVERISING MACHINE CO.

COLUMN TYPE FULLY AUTOMATIC BAND SAWS



ISO 9001 



H-260HB

H-360HA

H-460HA

H-560HA

<http://www.everising.com>

EVERISING PROVIDES MANY VARIOU



SPLIT FRONT VISE (FOR H-260HB, H-360HA, H-460HA)

This unique device design permits the workpiece to be automatically indexed to reduce remnant size. The vise securely clamps the workpiece on both sides of the cut, thus minimizing drop-off burrs. This design is most suitable for nesting or bundle cutting and is ideal for cutting short length pieces.



DIGITAL READOUT INDEX

Index length is easily set in millimeters with a hand wheel mounted to the front of the machine. Minimum increment of 0.025mm. (or 0.001").



INFINITELY VARIABLE SPEEDS

Blade speed is regulated by a hand wheel within easy reach of the operator. Variable speeds can handle a range of materials from nickel based alloys to aluminum. The speed is easily read on the L.E.D. digital readout.



HYDRAULIC BLADE TENSION

Proper blade tension is maintained by preset hydraulic pressure to assure greater accuracy, maximum cutting rates and a longer blade life.



NC CONTROL (OPTIONAL)

Programmable control allows you to program 9 different jobs with job number, Number of cuts, and cutting length, eliminating extensive set-up time. The NC controller also incorporates automatic kerf compensation.

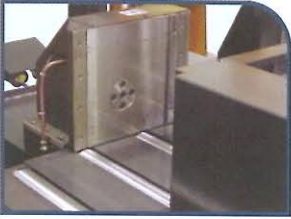


S CHOICES FOR SAWING MACHINES



SPLIT FRONT VISE (For H-560HA)

Hydraulically operated full stroke control for the dual vise clamping system. This unique device permits the workpiece to be automatically indexed to reduce remnant size. The vise securely clamps the workpiece on both sides of the cut, thus minimizing drop-off burrs.



FLOATING VISE (For H-560HA)

The double retracting shuttle vise handles slightly bowed or bent material that could not otherwise be indexed accurately.



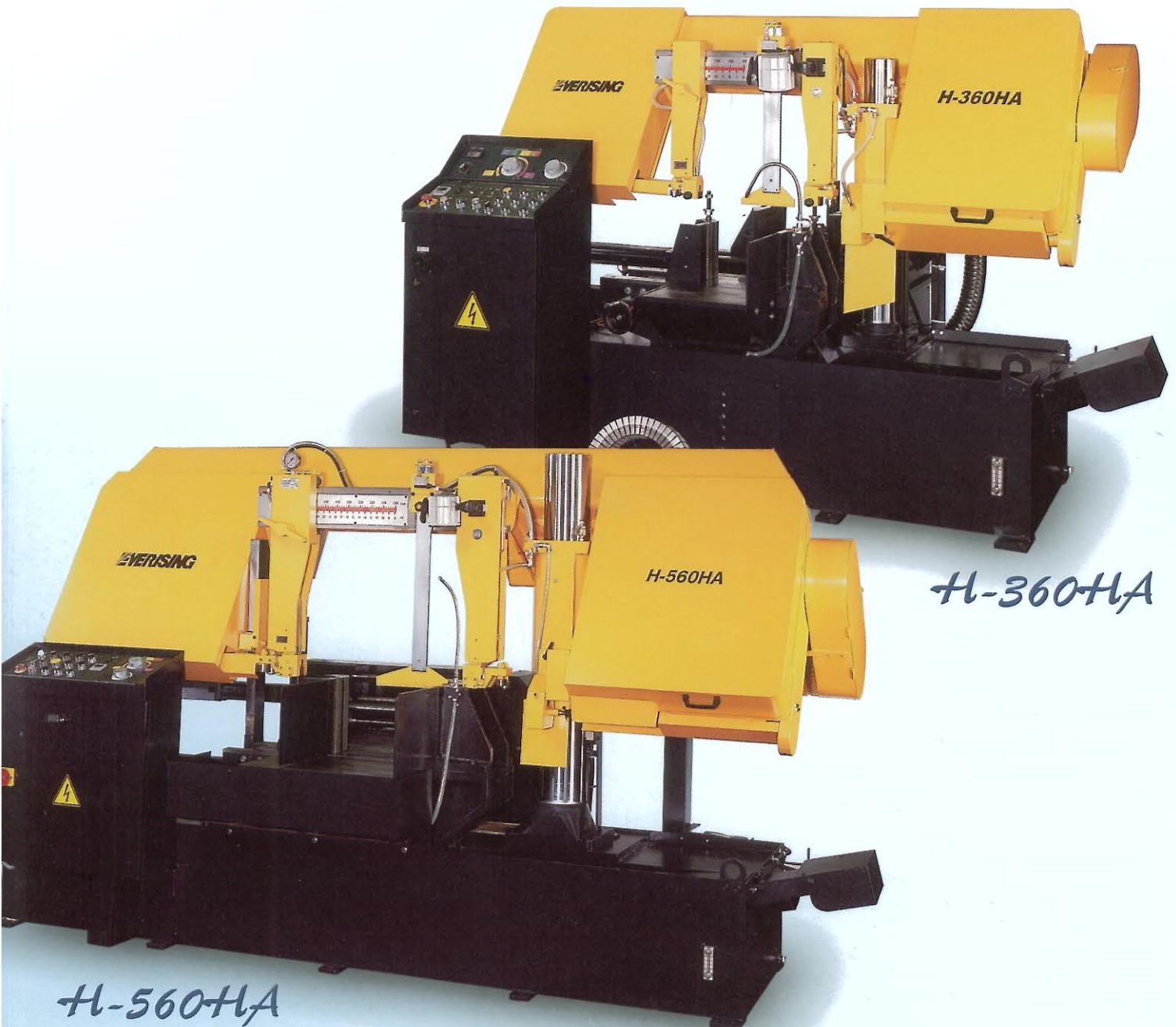
SLIDING WORK TABLE WITH ROLLER (For H-560HA)

It provides extremely smooth workpiece feeding and minimum friction, especially when working on heavy workpieces.



HYDRAULIC ACTUATED CARBIDE GUIDES (For H-560HA)

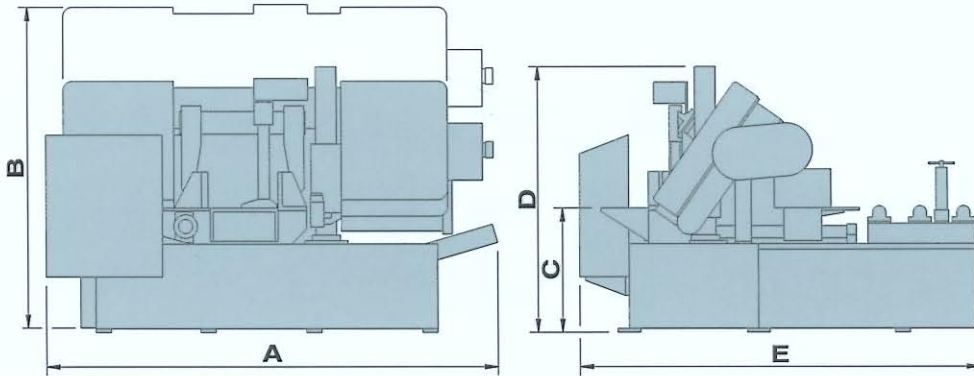
Hydraulically clamped without any clearance. Carbide faced saw guide inserts provide accurate guidance of the saw blade during cutting.



H-560HA

H-360HA

FLOOR PLAN AND OVERALL DIMENSIONS



	H-260HB	H-360HA	H-460HA	H-560HA
A	2170 mm (86")	2500 mm (98")	2820 mm (111")	3400 mm (134")
B	1500 mm (59")	1740 mm (69")	2020 mm (80")	2300 mm (91")
C	650 mm (26")	660 mm (26")	710 mm (28")	770 mm (30")
D	1500 mm (59")	1410 mm (56")	1690 mm (67")	2000 mm (79")
E	2100 mm (83")	2200 mm (87")	2190 mm (86")	2190 mm (86")

SPECIFICATIONS

Model		H-260HB	H-360HA	H-460HA	H-560HA
Capacity	●	260 mm (10")	360 mm (14")	460 mm (18")	560 mm (22")
	■	310 x 260 mm (12" x 10")	360 x 360 mm (14" x 14")	500 x 460 mm (20" x 18")	615 x 560 mm (24" x 22")
Bundle cutting	Width	145 to 190 mm (6" to 8")	180 to 280 mm (7" to 11")	195 to 310 mm (8" to 12")	NA
	Height	30 to 130 mm (1.2" to 5")	50 to 160 mm (2" to 6")	120 to 230 mm (5" to 9")	
Blade speed	50Hz	20 to 100 m/min (65 to 330 fpm)	18 to 90 m/min (60 to 300 fpm)	18 to 90 m/min (60 to 300 fpm)	18 to 90 m/min (60 to 300 fpm)
	60Hz	(INVERTER)	20 to 100 m/min (65 to 330 fpm)	20 to 100 m/min (65 to 330 fpm)	(INVERTER)
Motors:					
Blade drive		3.7 kw (5 HP)	3.7 kw (5 HP)	5.5 kw (7.5 HP)	7.5 kw (10 HP)
Hydraulic pump		0.75 kw (1 HP)	1.5 kw (2 HP)	1.5 kw (2 HP)	2.2 kw (3 HP)
Coolant pump		0.1 kw (1/8 HP)	0.1 kw (1/8 HP)	0.2 kw (1/4 HP)	0.2 kw (1/4 HP)
Blade size		3920x34x1.1 mm (155"x1.3"x0.042")	4420x34x1.1 mm (174"x1.3"x0.042")	5450x41x1.3 mm (215"x1.6"x0.05")	6600x54x1.6 mm (260"x2.1"x0.063")
Shuttle bar feed					
Single feed		400 mm (16")	500 mm (20")		400 mm (16")
Multiple feed		400 mm x 9 times (16" x 9)	500 mm x 9 times (20" x 9)		400 mm x 9 times (16" x 9)
Minimum clamp		-	-	-	110 mm
Machine weight		1750 kg (3860 lb)	2000 kg (4410 lb)	3600 kg (8000 lb)	4500 kg (9920 lb)
Floor space		2170 x 2100 mm (85" x 83")	2500 x 2200 mm (98" x 87")	2820 x 2190 mm (111" x 86")	3400 x 2190 mm (134" x 86")

※ Specification subject to change without notice for improvement and modification.

STANDARD FEATURES

- Hydraulically controlled dual-vise clamping system.
(H-260HB, H-560HA, are full stroke controlled)
- Shuttle type automatic feed and sliding work table with roller.
(Only for H-560HA)
- Shuttle type automatic feed. (For H-260HB, H-360HA and H-460HA)
- Roller bearing carbide blade guide system.
(H-560HA is hydraulically clamped.)
- Preset cut counter with shut-off.
- Infinitely variable blade speeds.
- Power driven wire brush.
- Nesting fixture for bundle cutting.
(Not available on H-560HA)
- Hydraulic blade tension.
- Floating shuttle vise.
- PLC control for all electric and hydraulic functions.
- Split front vise.
- Idle wheel motion detector with blade stalling and breakage shut-off.
- Flushing hose for machine cleaning.
- Multiple index. (9 times)
- Automatic work height control and fast approach.
- Work light.
- Roller stock table 2M long.
- One M42 bi-metal saw blade.
- One set of tools and tool box.

OPTIONAL ACCESSORIES:

- Automatic chip conveyor.
- Out of square detector. (Except H-260HB, H-360HA)
- Variable vise pressure
- Infinitely variable speed controlled by inverter.
- NC control.
- Full stroke vise clamping (For H-360HA, H-460HA)

EVERISING
EVERISING MACHINE CO.

23, 8TH RD., TAICHUNG INDUSTRIAL
PARK TAICHUNG 407, TAIWAN.

TEL: +886-4-23505300 / 23593178

FAX: +886-4-23505420

E-mail: evrs@ms13.hinet.net

evrs@everising.com.tw

Web Site: <http://www.everising.com>